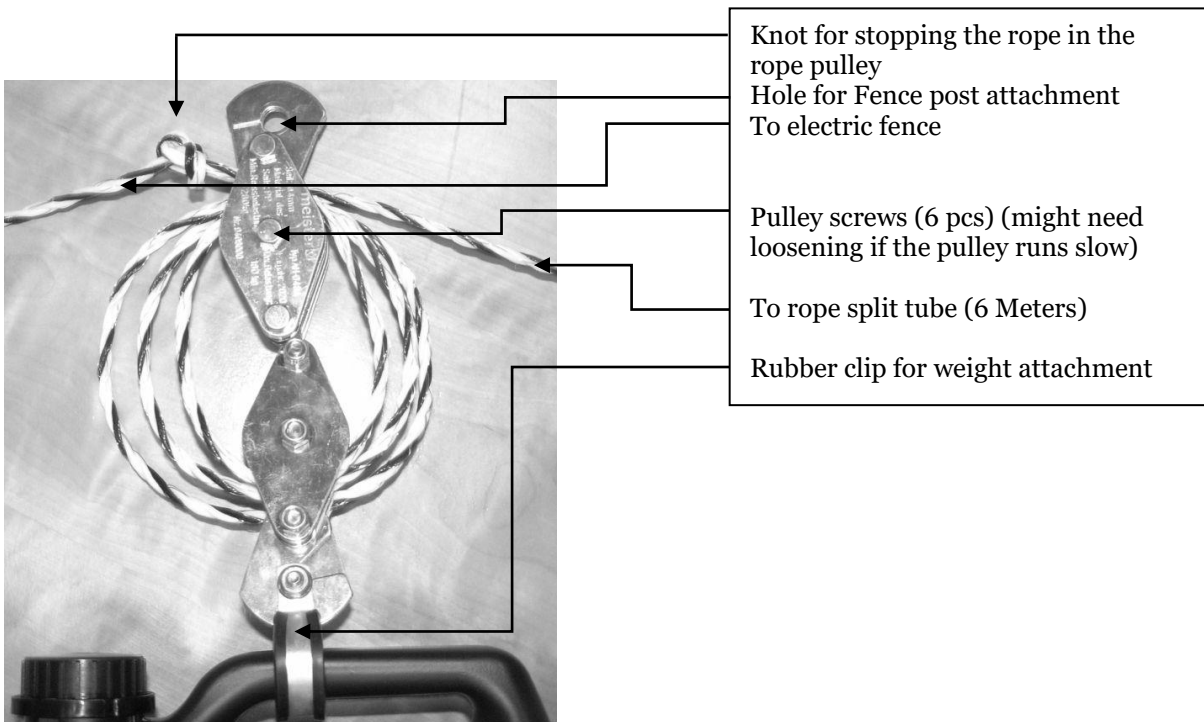
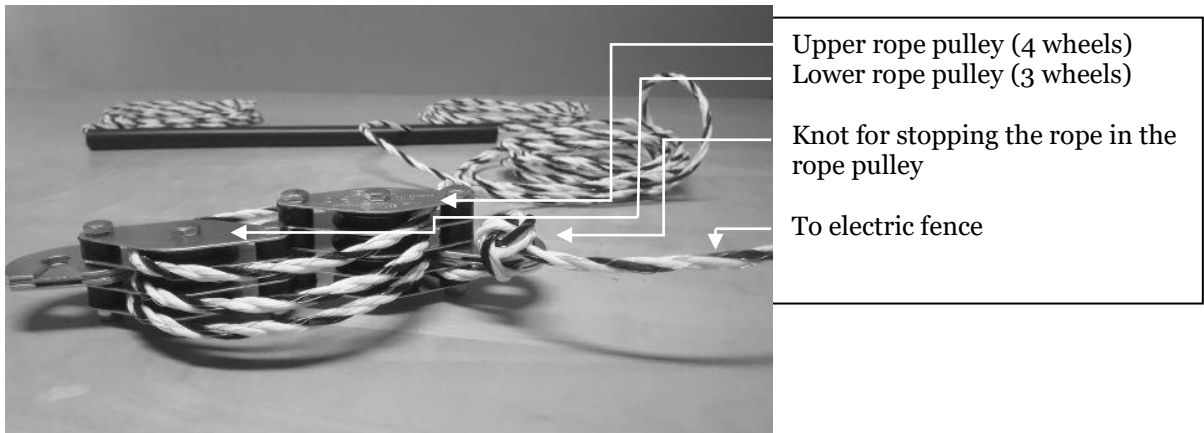


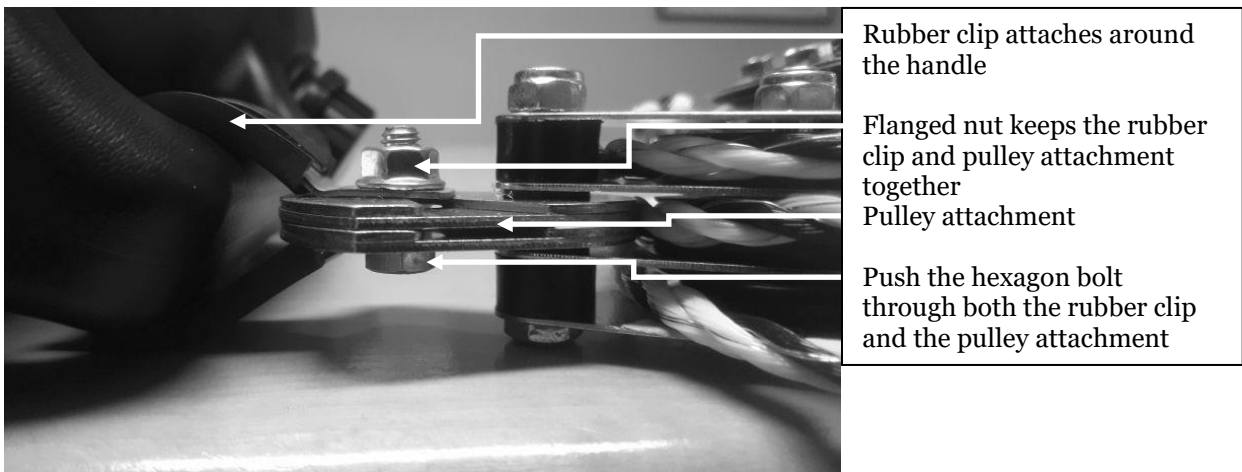
# Instruction for use, gate opener G112

Rev 2.8

- 1- Unpack the rope pulley and swap the nylon rope with the included electric fence rope.



- 2- Attach the weight(plastic can).



### 3- Attaching to fence posts.

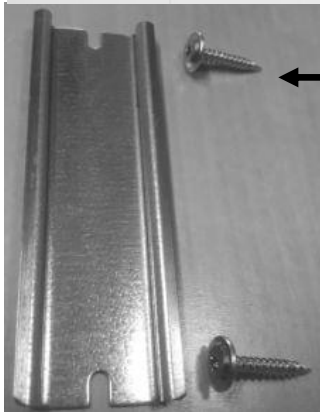


Timer  
Slot for mounting rail

The timer hook can handle a maximum of 2kg rope tension.

At the bottom there are ventilation slots – These always has to point down to avoid any condensation issues.

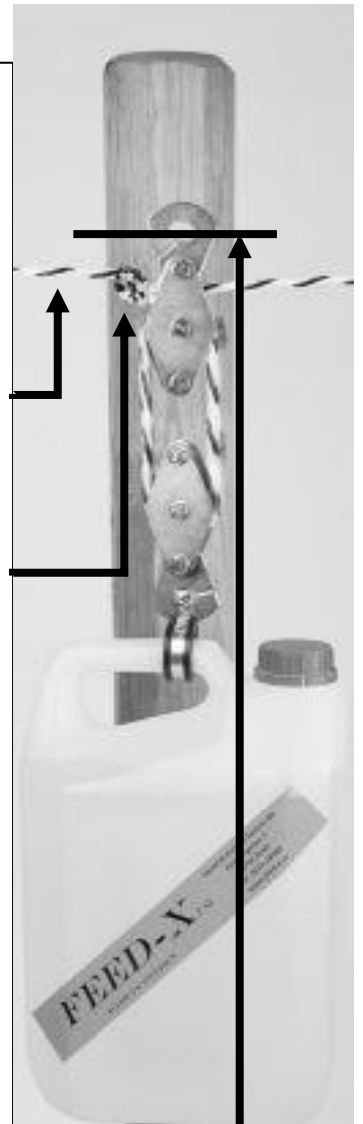
Connect to electric fence



Mounting rail – quick attachment to fence post.

Knot for stopping the rope in the rope pulley (see also next page)

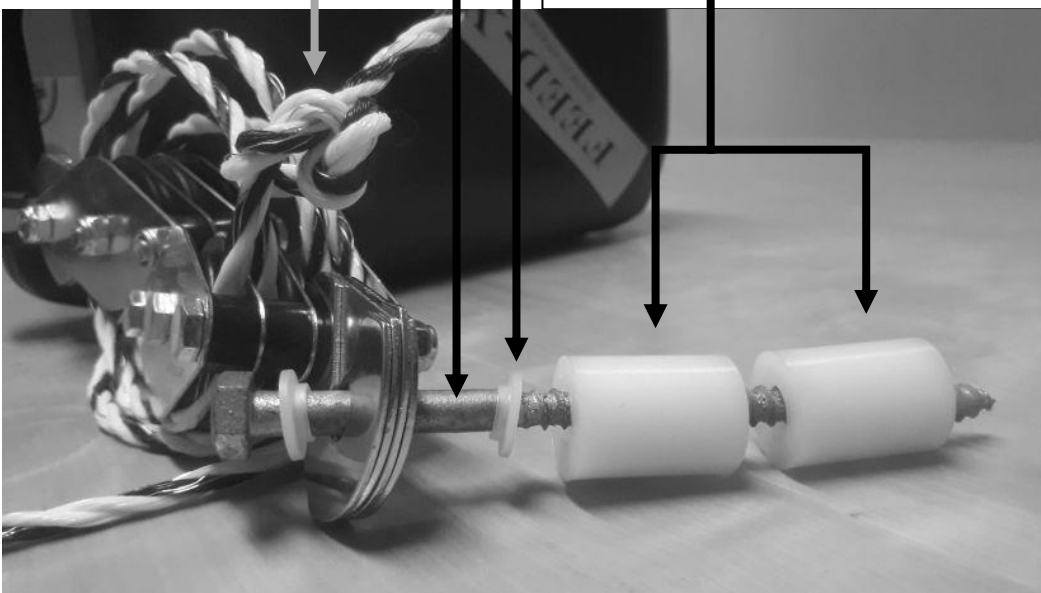
Fill the entire plastic can with sand or gravel.



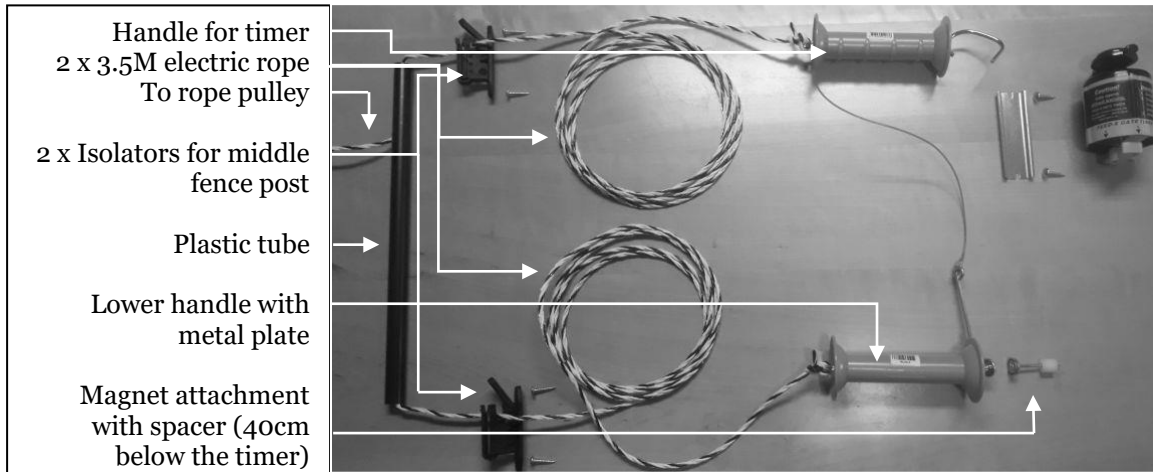
Mounting height:  
1M = max 3,3M  
gate width.

Knot for stopping the rope in the rope pulley (see also next page)

Mounting screw for rope pulley  
(Pre-drill 5mm hole if wood is hard.)  
Insulating washer (one on each side)  
Spacers



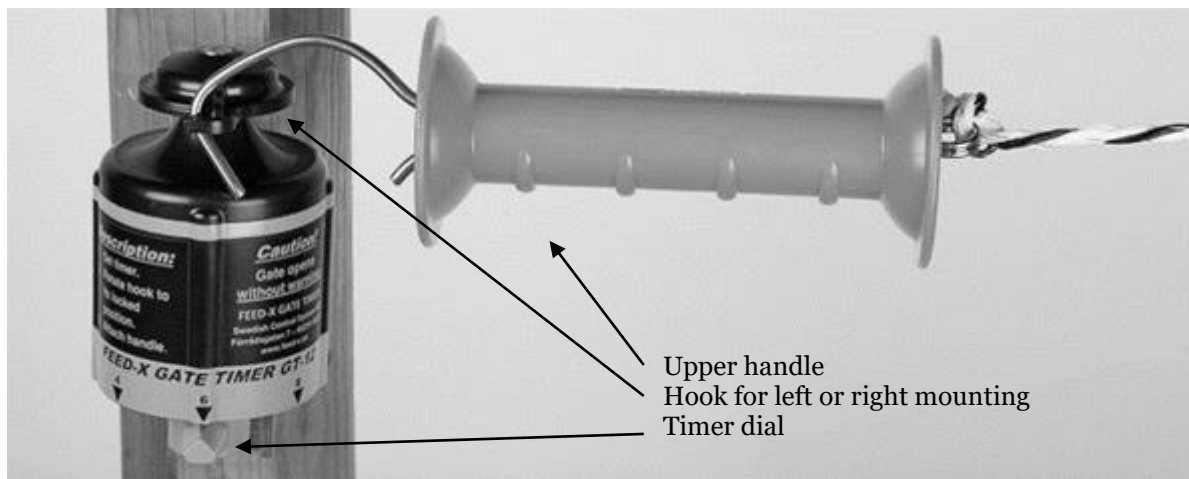
#### 4- Parts for gate with double rope



When the gate is open, (see picture on next page) tie the rope stop knot so that the weight just reaches the ground. When the mounting screw for the rope pulley is at 1 M the max gate width is 3.3M . If you increase the mounting height with 10 cm the max gate width increases by 60 cm(i.e. 3.9M)  
 Connection to the electric fence is always made next to the pulley. The whole gate can be turned for left or right mounting.

NOTE the three posts must be in a straight line (as shown in last picture on next page).

For more information and instructions check out our webpage or Youtube channel: [WWW.Feed-X.se](http://WWW.Feed-X.se) , [Youtube.com/channel/UCco-r5wTaPFj3fU75Tina1Q](https://www.youtube.com/channel/UCco-r5wTaPFj3fU75Tina1Q) or search for Feed-X on Youtube



#### Use

1. Set the timer dial to the desired delay. 6 or 12 hours possible range depending on model.
2. Turn the plastic hook until it locks.
3. Attach gate upper handle to the hook and the lower handle to the magnet.
4. Prepare the gated section of pasture with hay – Done.

#### Tips

Tip 1 : The hook on the handle can be bent into a loop (With a pair of pliers and some good will) if there is a risk that the hook gets stuck in anything when opening.

Tip 2 : Test run a couple of times after assembly to make sure it works. If the gate opens slowly – loosen the 6 screws that hold the rope pulley together – so the weight can fall more easily.

Tip 3 :The rope pulley must point straight towards the timer to work properly.

Tip 4 : With cold and damp weather there is always a risk that the retracting of the gate might freeze. A thorough coating of Oil spray type 556 or WD40 on the rope and rope pulley wheels greatly reduces the risk of issues.

Tip 5 : If the horses are intuitive they might find that the timer can be an interesting object to chew/nip at. In that case we recommend that you wind a few loops of electric wire around the timer and connect to the fence.

**mounting example :**

Closed gate



Open gate

3.3M

3.3 till 4.3 M



**NOTE**

Regardless of, if you are using a normal gate or a Feed-X gate, there are always risks with gates and fences. In case of guarantee issues or other damage, we follow the trade terms stated in NL17.

**For more information and instructions check out our webpage or Youtube channel: [WWW.Feed-X.se](http://WWW.Feed-X.se) , [Youtube.com/channel/UCco-r5wTaPFj3fU75Tina1Q](https://www.youtube.com/channel/UCco-r5wTaPFj3fU75Tina1Q) or search for Feed-X on Youtube**

**Swedish Control Systems AB**  
Förrådsgatan 7, 662 34 Åmål, SWEDEN

Tel:0532 18684 [www.feed-x.se](http://www.feed-x.se)

----- 20 years of experience in designing and building state of the art automatic horse feeder systems -----